

Innovative Leader for High Performance Cortex®-M4 MCU

2021.11

Artery Technology Company

The logo for Artery Technology, featuring a stylized 'A' composed of a grid of dots on the left, followed by the word 'ARTERY' in a bold, white, sans-serif font.

01

Introduction

About Us

Development Timeline

02

Product Roadmap

AT32 Series MCU

AT32 MCU Ecosystem

Product Highlights

03

Successful Applications

AT32 Series Applications

Focus on Our Advantages

Introduction



About Us



ARTERY

An excellent 32-bit
MCU designer

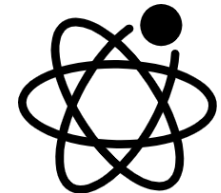
Artery Technology is a professional MCU design company founded in 2016. Since its establishment, ARTERY has been devoted to promoting innovation-driven development trend of 32-bit MCU in the global market. With leading chip R&D technology, complete silicon IPs and professional integration experience, we have managed to develop the Cortex®-M4 MCU with up to 288 MHz, realizing faster CPU execution.



Founded in 2016



Strong R&D team (up to 85%)



Leading R&D technology



Complete solutions



100M+ deliveries

About Us

“

■ Our vision

Continued efforts for an excellent 32-bit MCU designer

■ Core values

Sincere, practical, innovative and aggressive

■ Corporate social responsibility

Strive for a sustainable future with technology

■ Quality commitment

ISO 9001 Quality Management System Certification

JEDEC & IEC standards compliant

Quick and effective troubleshooting mechanism

Powerful tech support for your concerns

Help you find quick solutions with advanced technology we created.



Win-win cooperation



Profession

Development Timeline

Established Artery Tech
A design company focusing on 32-bit MCU

2016

Advanced Process
55nm applied to the whole AT32 family

2018

Rich MCU Selection
Up to 100+ Parts

2019

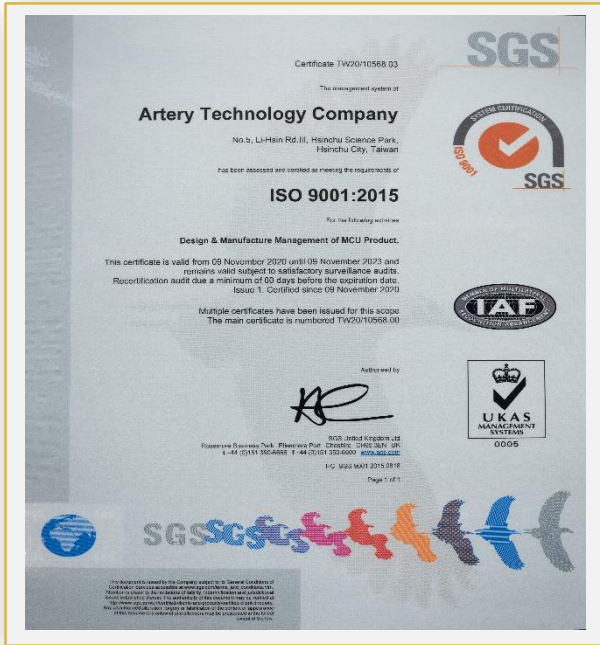
ISO 9001 Certification
Passed ISO 9001 certification

2020

Booming Shipment Since 2018
100M+ units by the end of 2021.

2021

Quality & Awards



Awards

ISO 9001 Quality Management System Certification

Best MCU Product Award & Most Potential IC Designer Award 2019

The 3rd IC Unicorn 2020

Potential IC Designer 2021

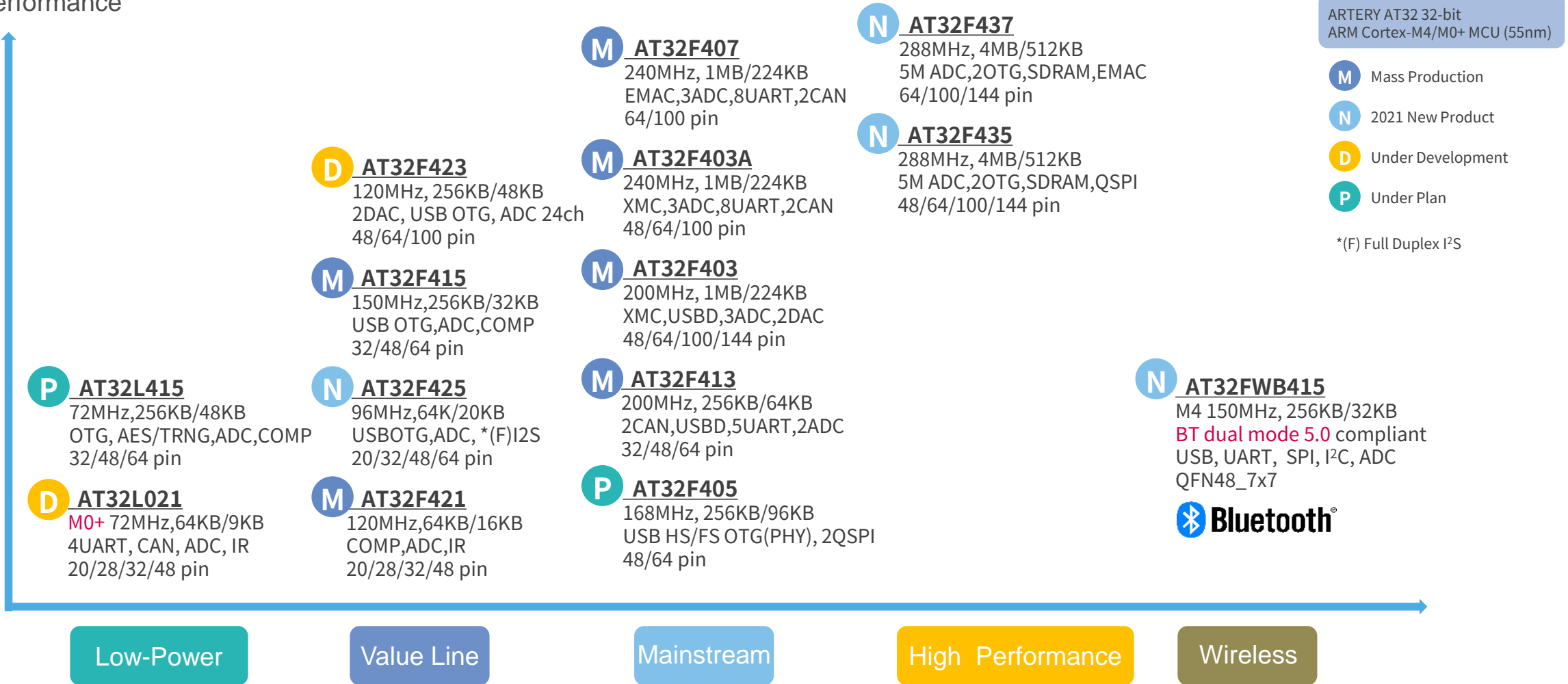


Product Roadmap & Ecosystem



AT32 32-bit ARM Cortex-M4/M0+ MCU (55nm)

Performance



MCU Package List



20-pin TSSOP
6.5 x 4.4 mm



20-pin QFN
3 x 3 mm



28-pin QFN
4 x 4 mm



32-pin QFN
4 x 4 mm



32-pin QFN
5 x 5 mm



48-pin QFN
6 x 6 mm



Minimum area

- QFN20 3x3 (9mm²)
- Pitch: 0.4mm
- Thickness: 0.75mm



32-pin LQFP
7 x 7 mm



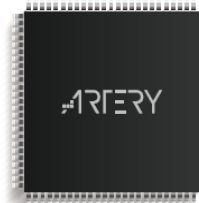
48-pin LQFP
7 x 7 mm



64-pin LQFP
7 x 7 mm



64-pin LQFP
10 x 10 mm



100-pin LQFP
14 x 14 mm



144-pin LQFP
20 x 20 mm



Various packages

- LQFP
- QFN
- TSSOP

High performance MCU – AT32F435/437



Product positioning:

- 288 MHz MCU / Rich digital and analog peripherals
- Applications: sweet robot, micro printer, IoT gateway, serial server, HMI, LED display, QR code scanner, industrial control and 5G

Specifications:

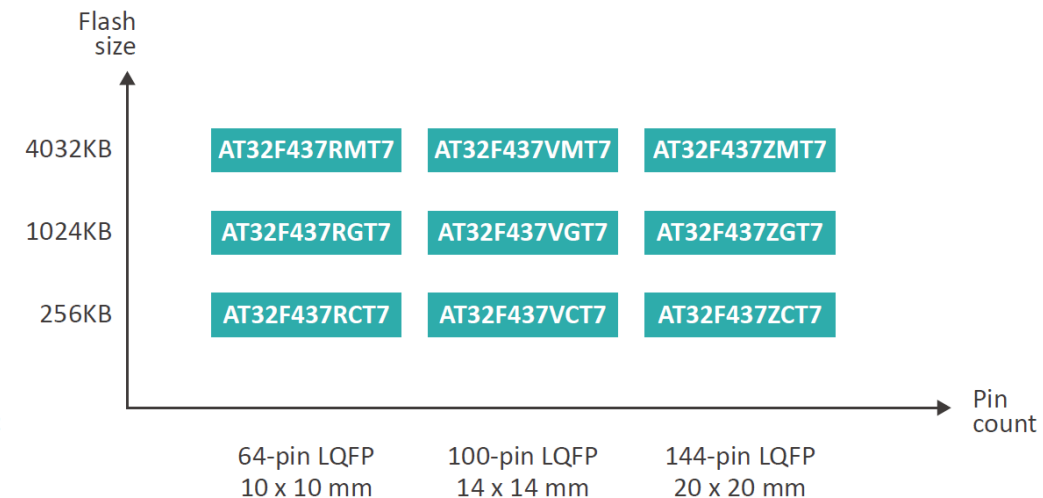
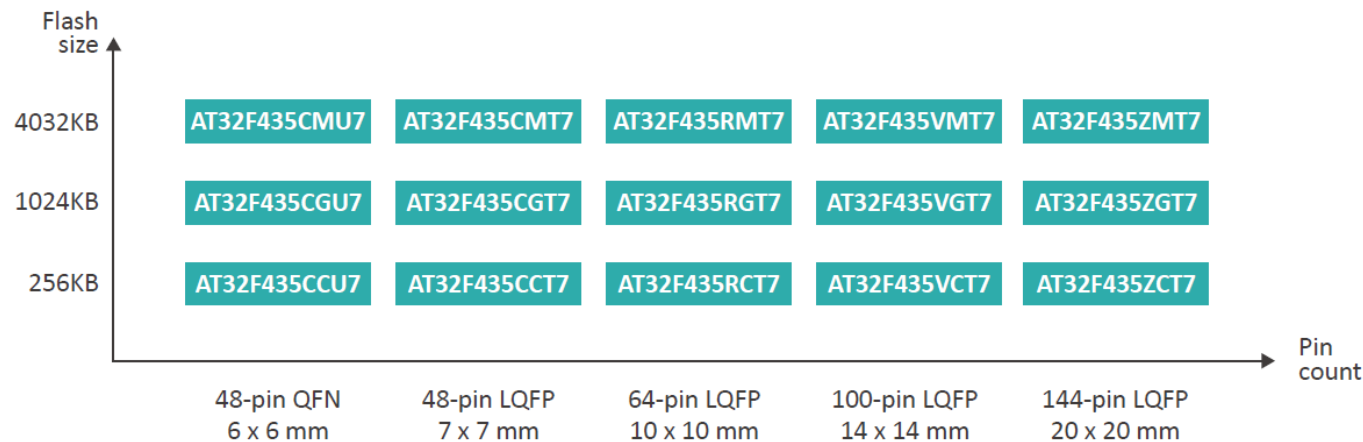
- Cortex-M4 288 MHz CPU, DSP + FPU
- 256/1024/4032KB Flash, 512KB SRAM

Main features:

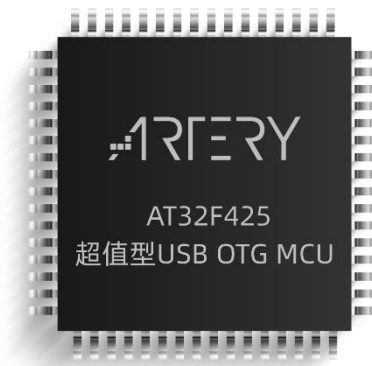
- 3x 12-bit 5.33 Msp/s ADC
- 8~14 bit digital video parallel interface (DVP)
- IEEE-802.3 10/100Mbps Ethernet controller (**F437 only**)
- SDRAM extension/2 QSPI/2 USB OTG/8 UART/2 CAN

Packages available:

- QFN48, LQFP48, LQFP64, LQFP100, LQFP144



Ultra-value USB OTG MCU – AT32F425



■ Product positioning:

- The most cost-effective USB OTG MCU
- Applications: gaming keypad, gaming mouse, USB accessories, micro printer, OBD, industrial control, motor control

■ Specifications:

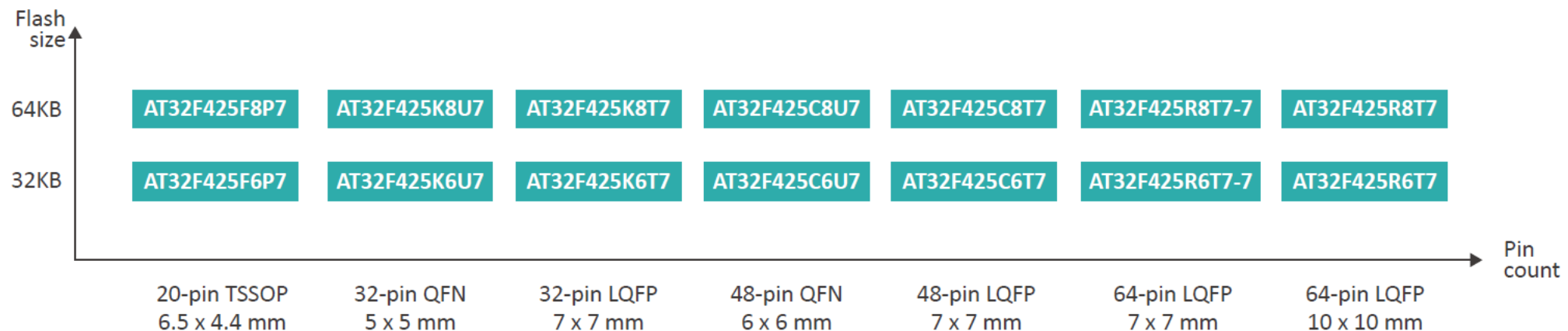
- Cortex-M4 96MHz CPU, DSP
- 32+4/64+4KB Flash, 20KB SRAM

■ Main features:

- SRAM with parity check
- USB OTG (support Xtal-less in device mode)
- High-speed 2 Msps ADC
- 4 UART/2SPI (I²S)/2 I²C/CAN

■ Packages available:


- TSSOP20, QFN32, QFN48
- LQFP32, LQFP48, LQFP64




AT32 MCU Ecosystem

----- Product selector ----- Development design ----- Tech/Trial run support ----- MP/Upgrading ----->

PSG

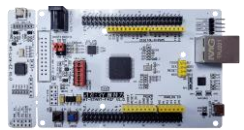


User guide




Cross Ref.

AT-START board

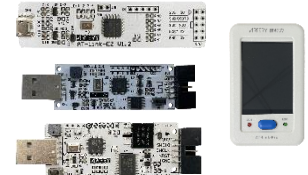


Tech documentation



Datasheet
FAQ/AP note
Example code

Programming tools



Application solutions

- USB OTG
- QR Decode
- IAP
- LittlevGL
- IEC 60730
- Ethernet

IDE



Tools by ARM

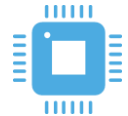


IAR SYSTEMS



eclipse

Sample testing



3rd party



AT32F4xx Std library (BSP)

- 100+ example codes
- FreeRTOS
- sLib, IAP Demo, USB OTG demo
- RT-Thread OS/IDE

Online & offline FAE support



User firmware protection

- Encrypted programming
- sLib for secondary development/algorithm protection

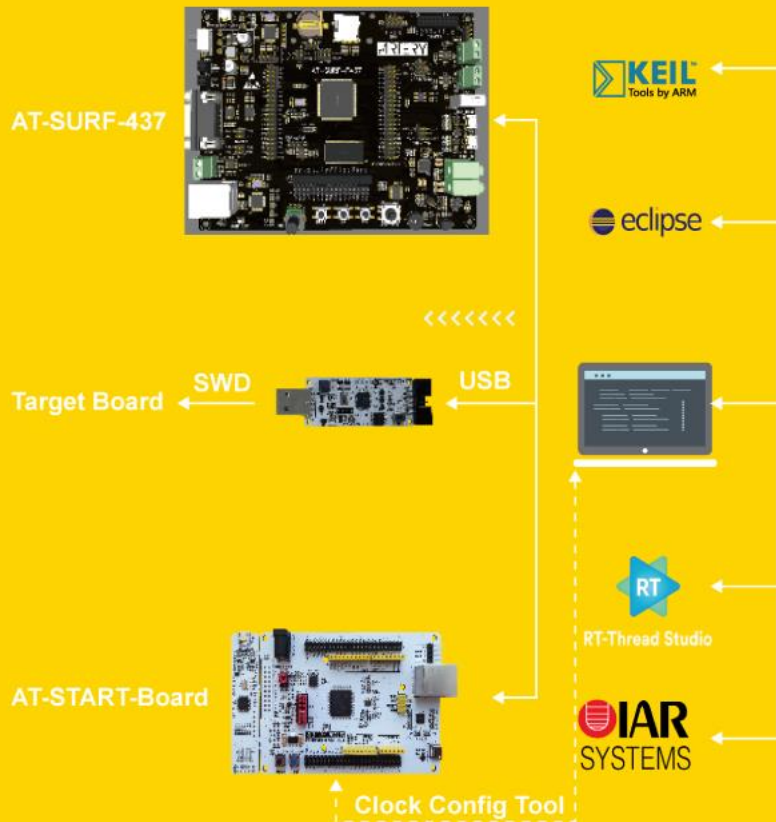


Reliability test



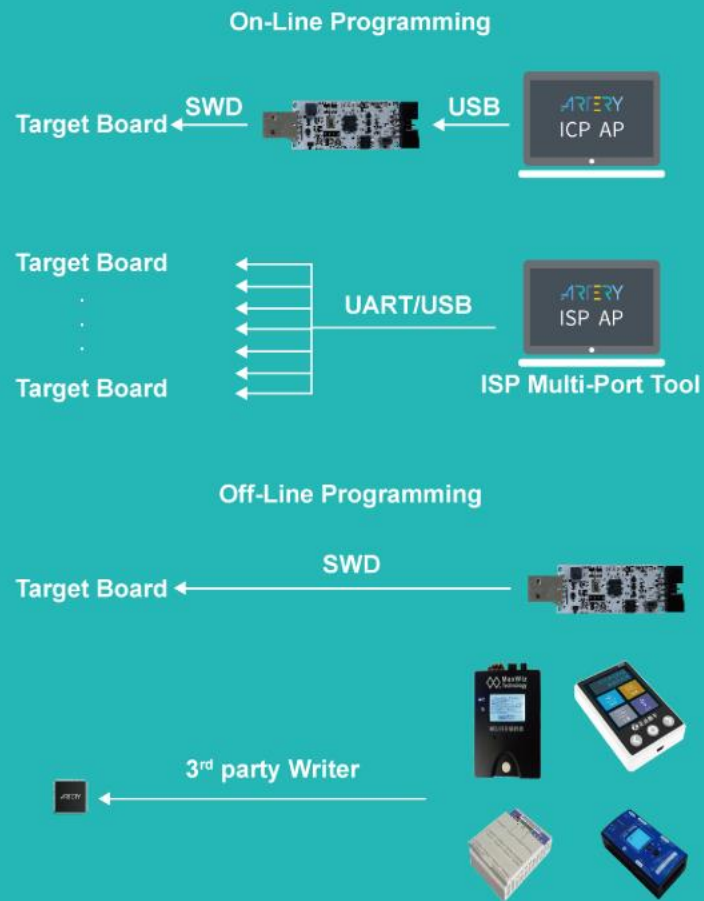
AT32 MCU Tech Support Trilogy

Development

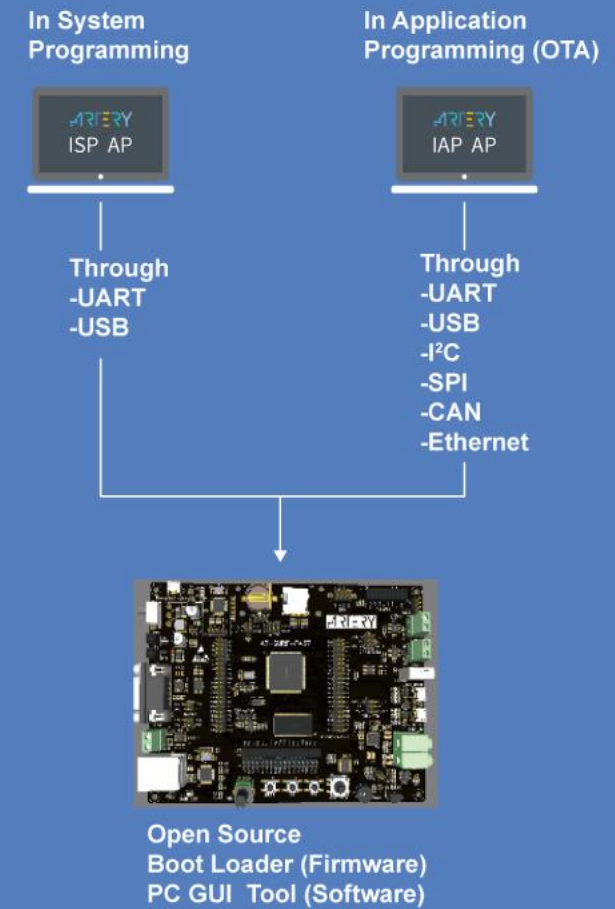


OS Support : FreeRTOS & RT-Thread

Mass Production



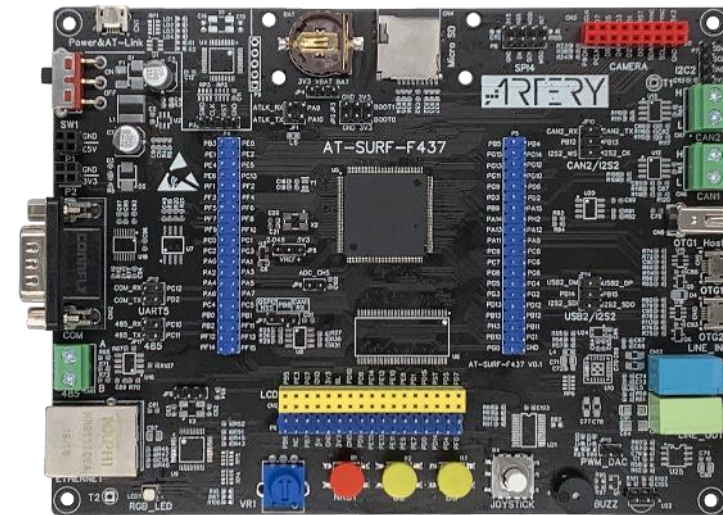
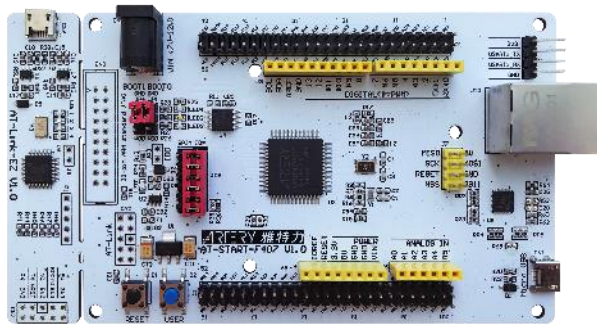
Upgrade



AT-START / SURF Board

AT-START

- Connected to main MCU via AT-Link/J-Link
- Compatible with Arduino™ UNO R3 hardware interface
- Update code using UART/USB DFU



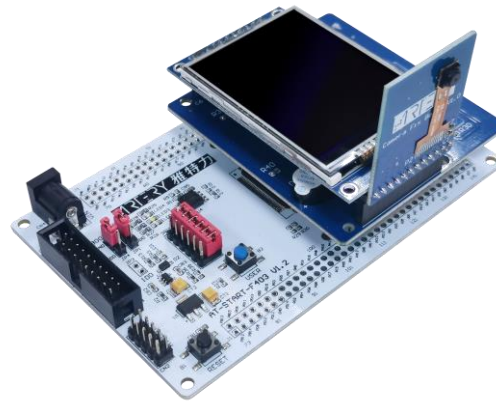
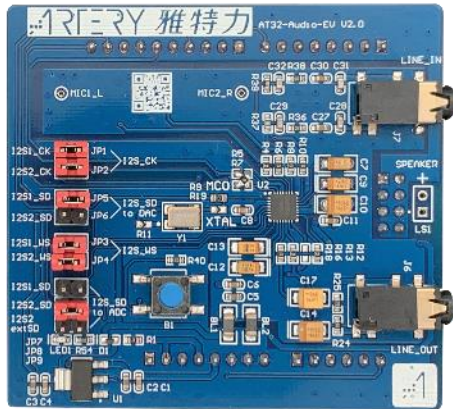
AT-SURF-F437

- 288MHz ultra-high speed/ Extend 256Mb SDRAM onboard
- 2 million pixel digital camera/3.5-inch 480x320 TFT-LCD screen
- Standard communication interface (RS-232, RS-485 and dual CAN receiver/transmitter)
- Dual OTG and 10/100M Ethernet
- MIC / LINE IN / LINE OUT

AT32-Audio / Video / LCD Board

AT32 Audio Evaluation Board

- Support multi-media playback through audio signal processing
- Standard Arduino™ Uno R3 extension interface
- Support 2 MIC input / LINE IN / LINE OUT



AT32 Video Evaluation Board

- Support multiple image data processing
- Standard Arduino™ Uno R3 extension interface
- SPI interface QVGA CMOS Sensor
- 2.4-inch TFT LCD screen

AT32 LCD Evaluation Board

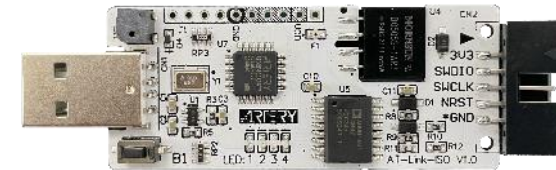
- Support 2.8-inch 240x320 TFT-LCD resistance touch screen



AT-Link Family

AT-Link-Pro

- IDE online debugging, online/offline programming, output voltage regulating, offline parameter setting and USB-to-serial-interface
- Support LCD display and touch operation

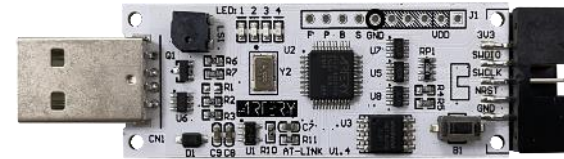


AT-Link-ISO

- Enhanced isolation protection over AT-Link

AT-Link

- Online/offline programming



AT-Link-EZ

- Online programming

Third-party Programmer Supported

■ In addition to ARTERY official tools (ICP/ISP), the following programmers are also supported:

- Acroview (www.acroview.com)
- Alientek (www.alientek.com)
- Armfly (www.armfly.com)
- Depiprogram (www.dediprogram.com)
- Y-chuang (<https://www.forcreat.com>)
- ICWORKSHOP (www.icworkshop.com)
- MaxWiz (www.maxwiz.com.cn)
- SG (www.sg.com.tw)
- XELTEK (www.xeltek-cn.com)
- XWOPEN (<https://xuanweikeji.taobao.com>)



Product Highlights

High-Efficient Core

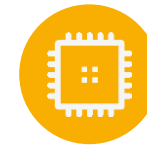
M0/M3 → M4+DSP+FPU

ARM



Cost-Effective

Enjoy M4 performance
with only M0 price

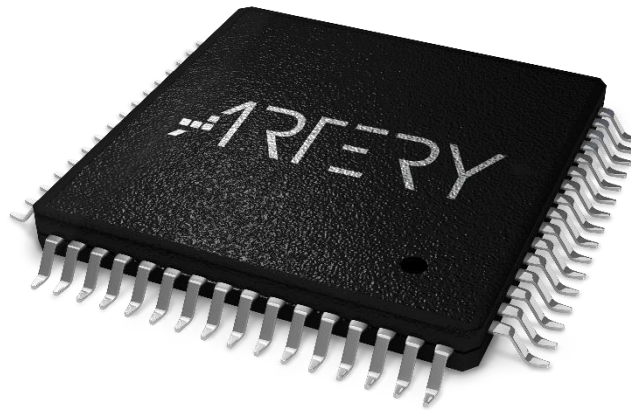


Maximum Frequency

72 MHz~288 MHz

Advanced Process

55nm



Security Library

Comprehensive
protection

Tools

Various development tools &
3rd party programmers



Wider Temperature

-40°~105 °C

Successful Applications



Industrial Control Applications

F403A / F413 / F421

Electric scooter controller



F403A / F413 / F407

Industrial sewing machine



F403A / F413



4G-5G base station

F415/ F421

Intelligent circuit breaker



F403A / F407

Industrial HMI



F403A / F413

Elevator



Automotive Electronics and Power Applications

F430A / F413

Intelligent charging pile



F403A / F413

ADAS



F403A / F413

T-Box (Automotive)



F413 / F415

OBDII / CAN Box



F415 / F421

BMS



F421

Inverter



F403A / F413 / F421

Photovoltaic



F403A / F413 / F421

Digital power



Business Applications

F437 / F407 / F403A
F413 / F415

Micro printer



F437 / F407 / F403A

Surveillance



F403A / F415

Digital water/electricity meter/
heating meter



F437 / F407

Serial port server



F415

Barcode scanner



F403A

QR code scanner



F437 / F403A / F413

Stage lighting



F407 / F403A / F415

KVM & KVM Dongle



Consumer Electronics Applications

F403A / F415

Sweep robot



F435 / F403A

Electronic whiteboard



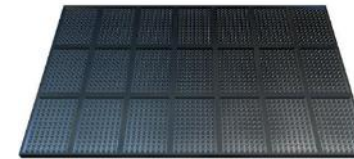
F403A / F413/ F415

3-axis stabilizer



F415/ F421

Synchronous/Asynchronous LED display



F421 / L021

High-speed vacuum cleaner



F405 / F415 / F425

Gaming mouse/keyboard



F415 / F425

Gaming pad



F403A / F413 / F415

Balance scooter/panel

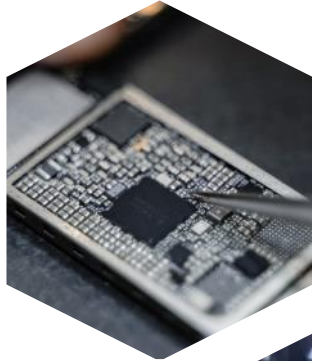


F421 / L021

Electric handheld tools



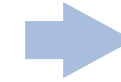
Focus on Our Advantages



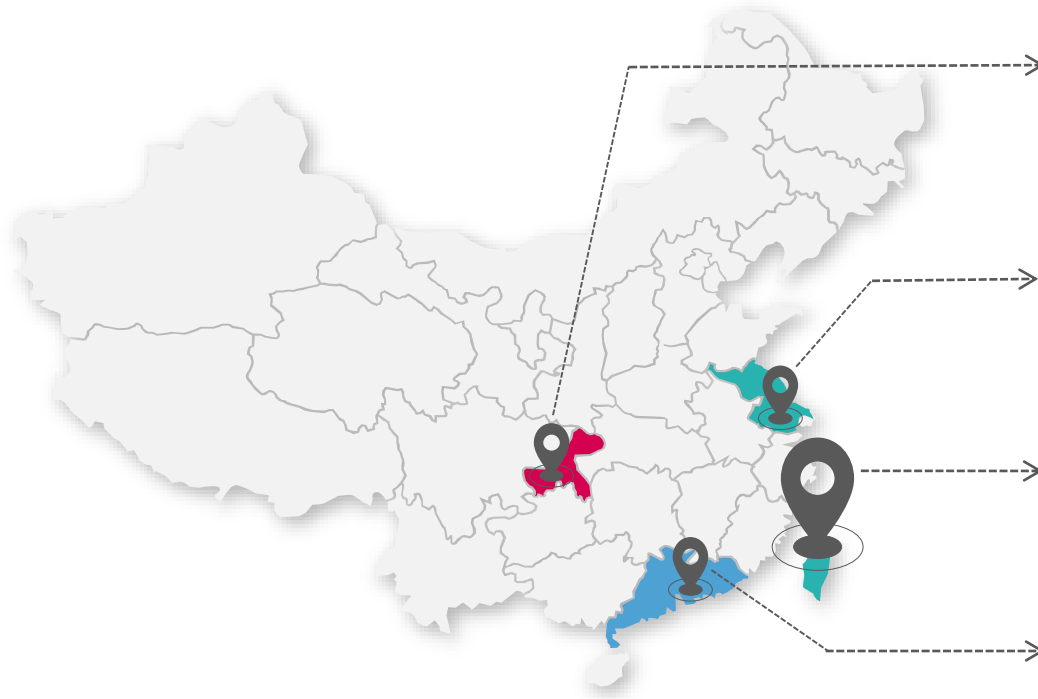
- ✈ Leading R&D technology
 - Rich experience in high-end microcontroller development and applications
 - Advanced technology and diversified silicon IP suited to various applications
 - Powerful tech support from Faraday team
 - Successful experience in high-level ARM Core SoC

- ✈ Optimized process and cost-competitiveness
 - 55nm process for higher performance and lower consumption and costs
 - Strong support from UMC for better control in quality, supply and costs

- ✈ Local strategic partners(Wafer/IP/Package/Test)



Contact Us



Chongqing (R&D)

10F, Kangtianxiinhui Bldg. 1, No.60, Kecheng Rd., Jiulongpo Dist.,Chongqing, China
+86-23-6868 8899

Suzhou (R&D, Sales & Tech Support)

C202-1, No.1355 JinJiHu Avenue, International Science & Technology Park, Suzhou Industrial Park
+86-0755-8390 0669 Ext. 62568

Taiwan (Headquarters)

5F., No. 1, Jinshan 8th St., East Dist., Hsinchu City 30080, Taiwan
+886-3-577 8788

Shenzhen (Sales & Tech Support)

Rm.603, Block Western, Innovation and Technology Plaza, Phase 2,Tian An Cyber Park, Futian District, Shenzhen
+86-0755-8390 0669 Ext. 62568



Official website

Sales service in Russia: info@ultran.ru +7 (812) 318 1895

Tech support in Russia: info@ultran.ru +7 (812) 318 1895